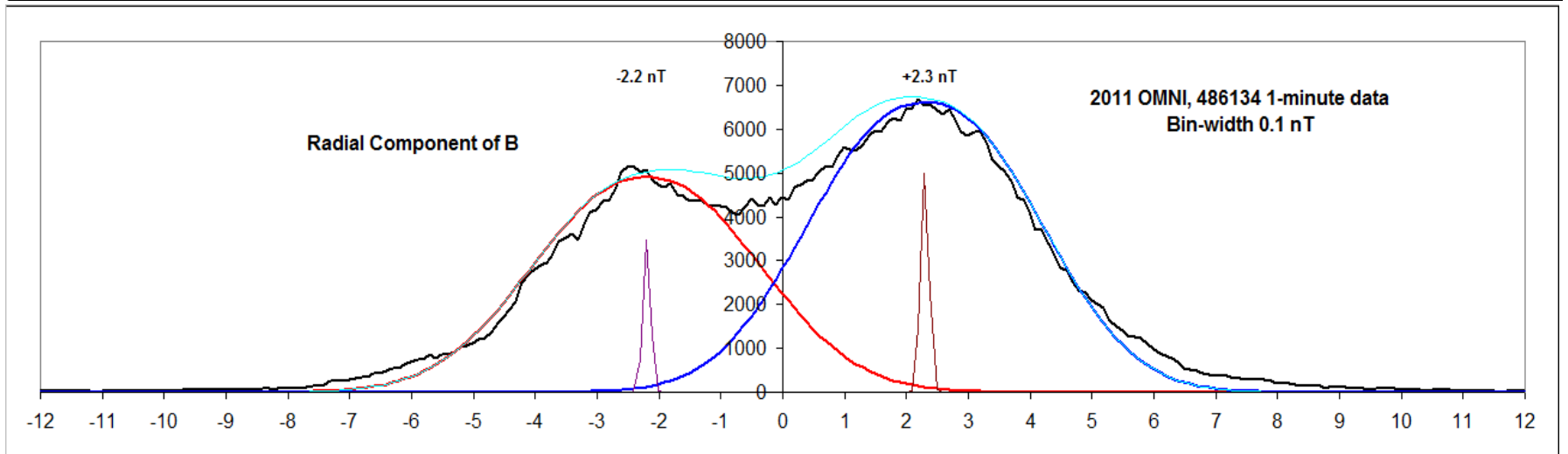
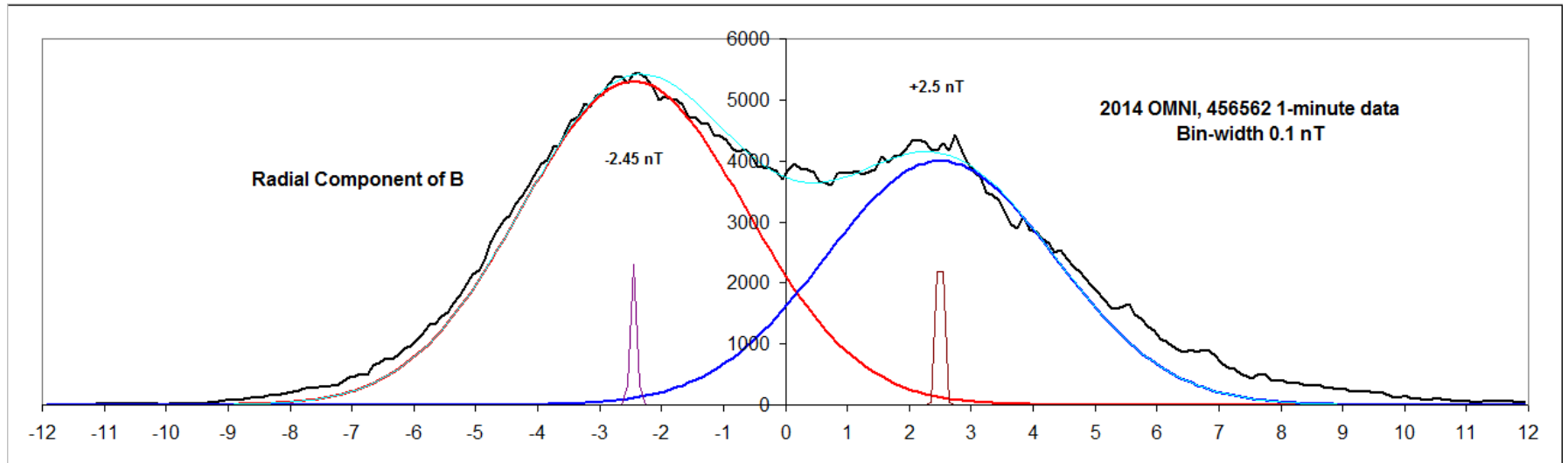


# Radial Component of HMF

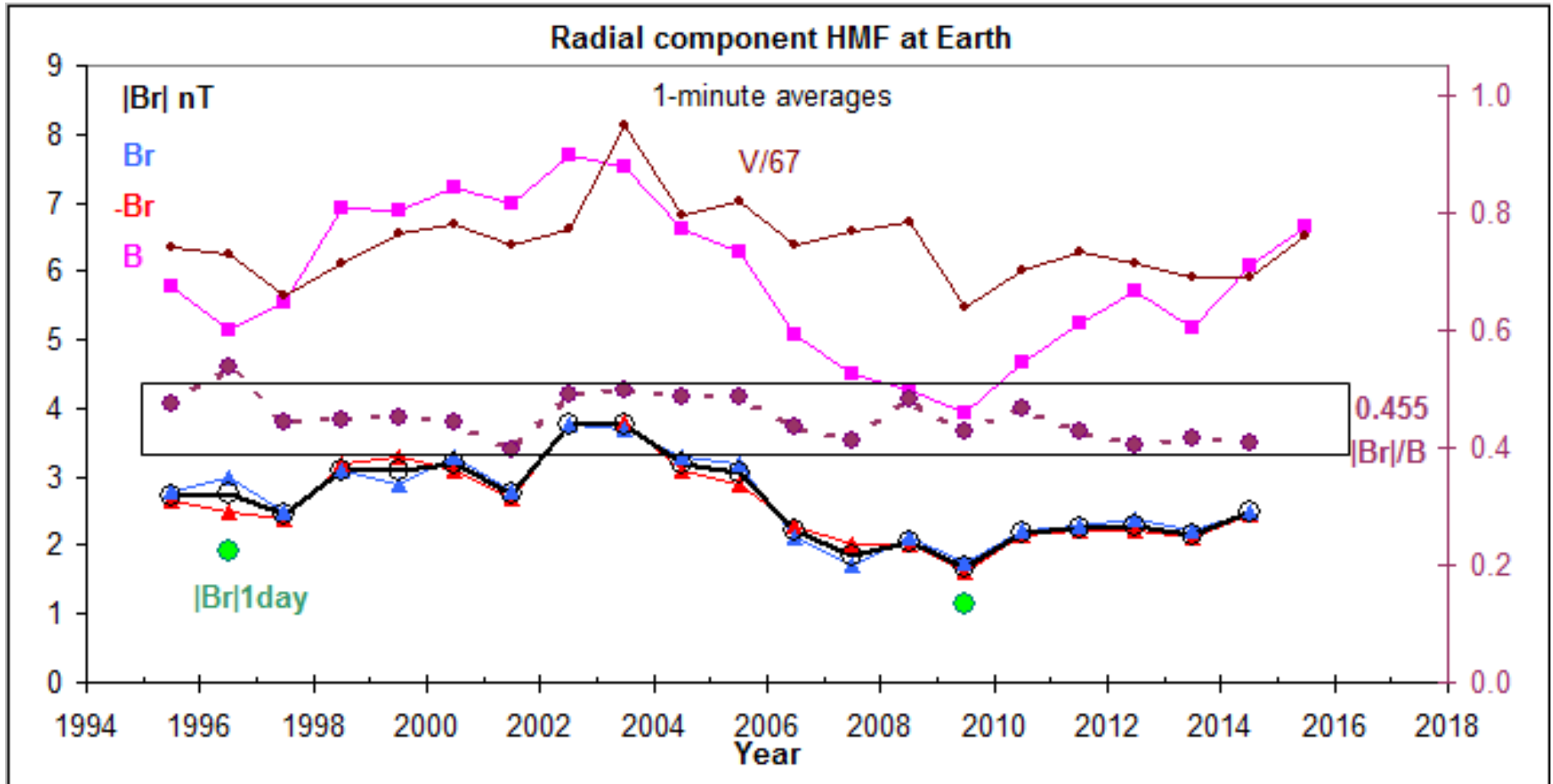
Leif Svalgaard

March 2016

# HMF as Sum of Two Gaussians

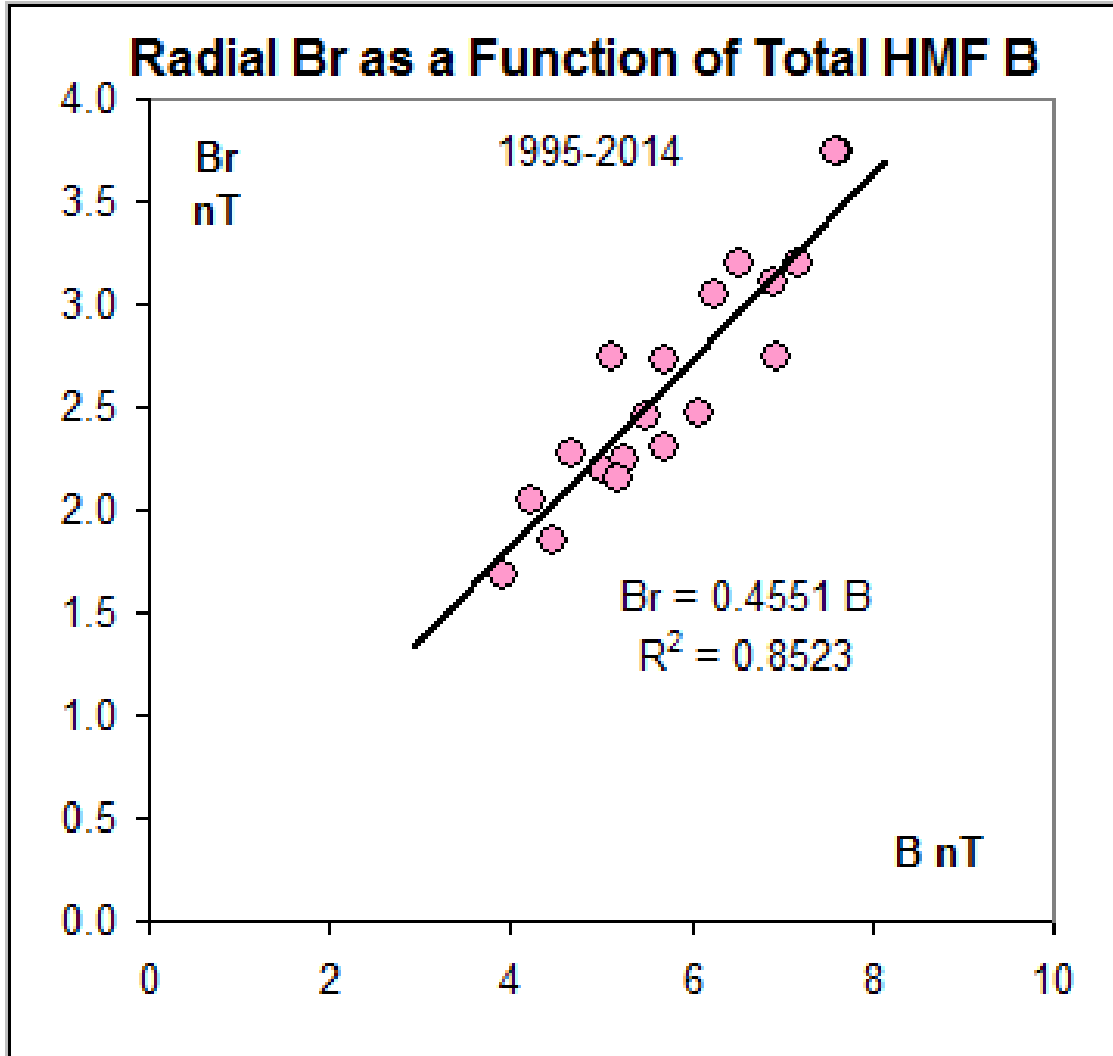


# Radial Component of HMF



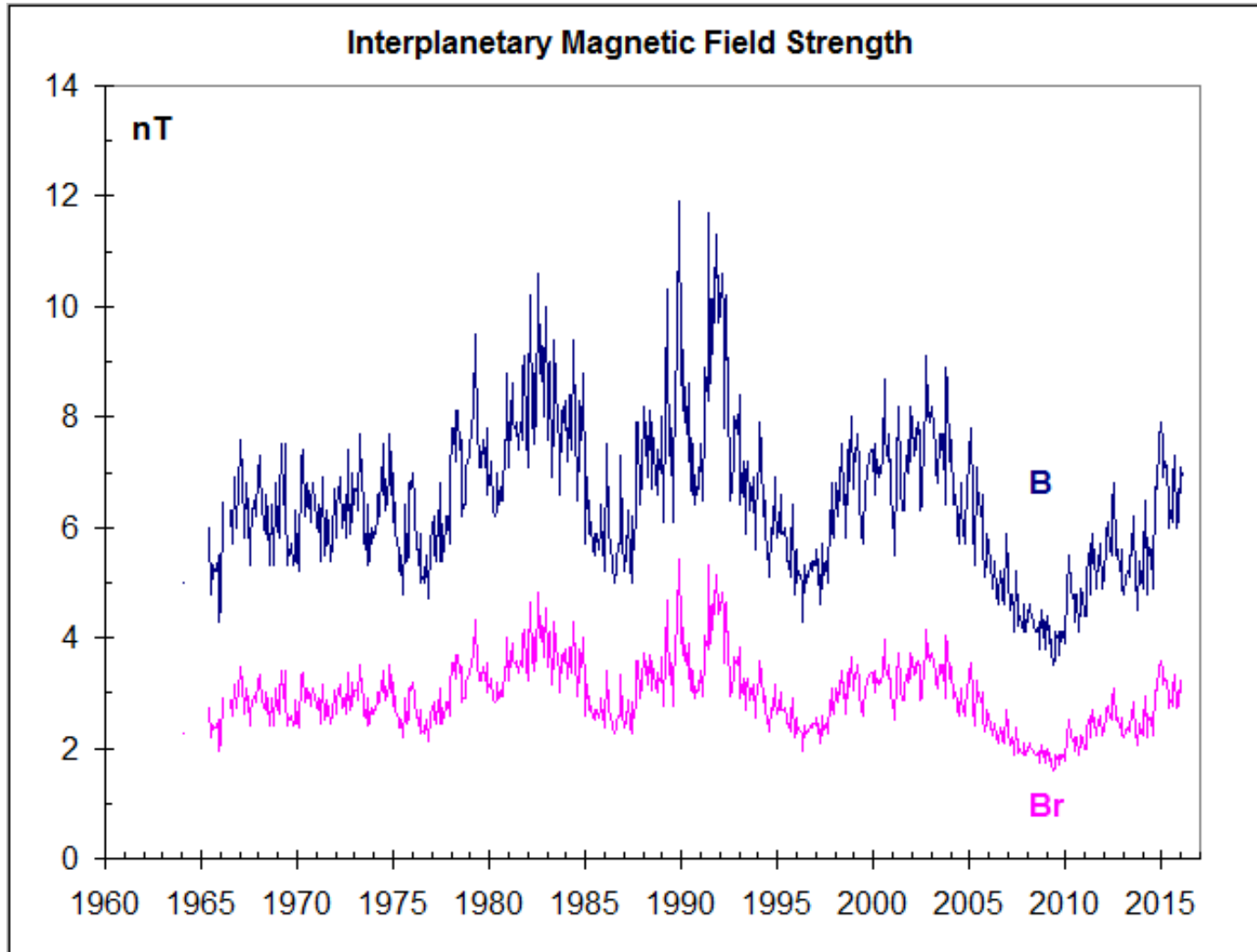
Computing  $Br$  as average over 1 day underestimates the radial component by 35% on average

# Radial Component vs. Magnitude



The radial component  $Br$  is nearly proportional to the total field magnitude  $B$

# HMF Magnitude and $B_r$



# Long-term Variation of HMF $B$

